

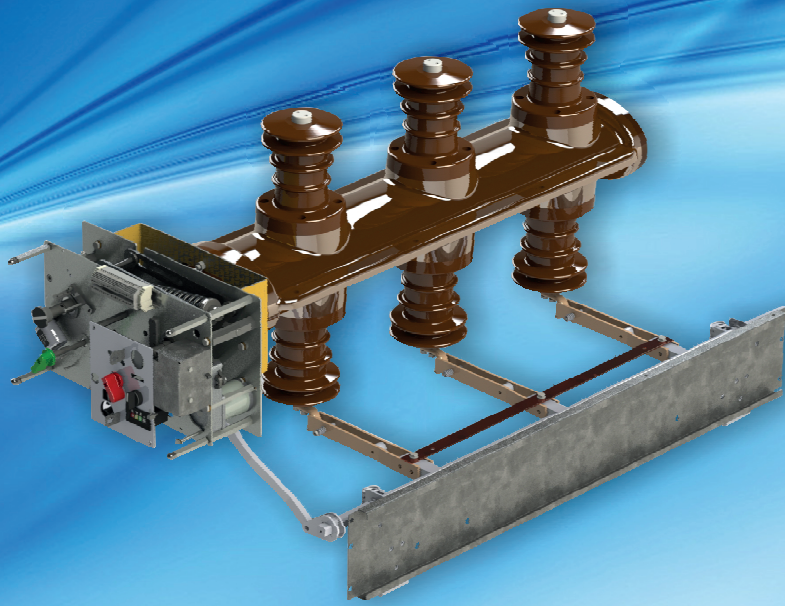
**BYA**

**SF<sub>6</sub> GAS INSULATED LOAD BREAK SWITCH**

**UP TO 40.5 kV**



# SF6 GAS INSULATED LOAD BREAK SWITCH



## General Specifications

BYA tye load break switches assure "switch-disconnector" specifications.

The main contacts of the switch in the epoxy resin enclosure which is filled with 1.5 bar SF6 gas and this sealed pressure system guaranteed for its life.

The switch contacts can be in one of the two positions; closed / open.

The earthing switch is outside of the enclosure, and its position clearly and safely can be observed directly.

Its operation is interlocked with the mechanism of the main contacts. It has independent operation for closing and opening. The safety of the gas filled enclosure is secured by the membrane system positioned at back side.

Auxiliary contacts indicating the position of the main contacts and for the earthing switch are present.

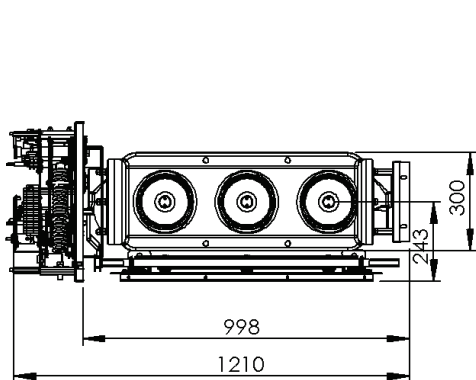
Operating mechanism can be charged manually by lever or optionally by motor. Charged mechanism has stored energy for closing and opening. Closing and opening functions can be done by the push-buttons or by the release coils. Fuse-trip system optionally can be equipped. Key type interlocks are possible.

TECHNICAL SPECIFICATIONS		12 kV	24 kV	38/40.5 kV
Rated voltage, kV		12	24	38/40.5
Rated power-frequency withstand voltage 50Hz 1Min (kV r.m.s.)	To earth and between phases	28	50	95
	Across the isolating distance	32	60	105
Rated lightning impulse withstand voltage (peak value)	To earth and between phases	75	125	200
	Across the isolating distance	85	145	220
Rated current, A		630		
Short time withstand current, 1s, kA		16/20/25		
Short time withstand current, 1s, kA(Peak value)		40/50/62.5		
Breaking capacity	Mainly active load,A	630		
	Closed-loop circuits,A	630		
	Line-charging breaking current,A	10		
	Cables-charging breaking current,A	16		
	No load transformer,A	6,3		
Related Standard		IEC 62271-103, IEC 62271-105		
Electrical endurance class		E3 ( 100 breaks )		
Mechanical endurance class		M1 ( 1000 operations)		
Earthing switch class		E2 ( 5 making)		
Ambient temperature for working		-5 / +40		
Release coil and charging motor options : Power supply		24V/48V/110V/220V DC, 220V AC		

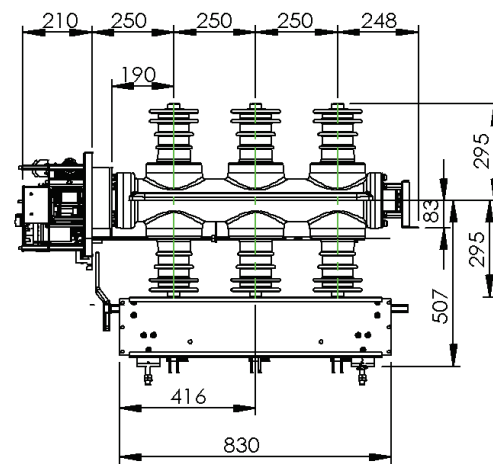
# SF6 GAS INSULATED DISCONNECTOR

12-24 kV  
630A LOAD BREAK SWITCH (width: 500mm)

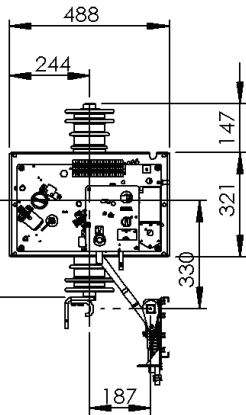
Top view



Side view

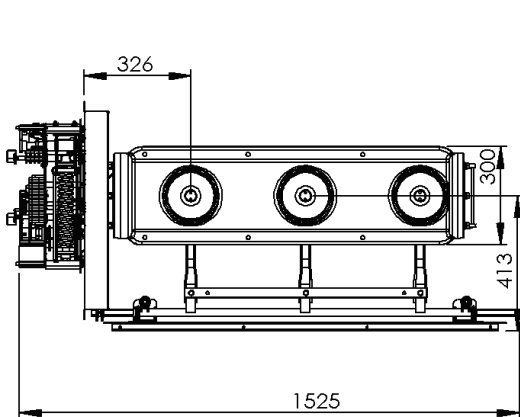


Front view

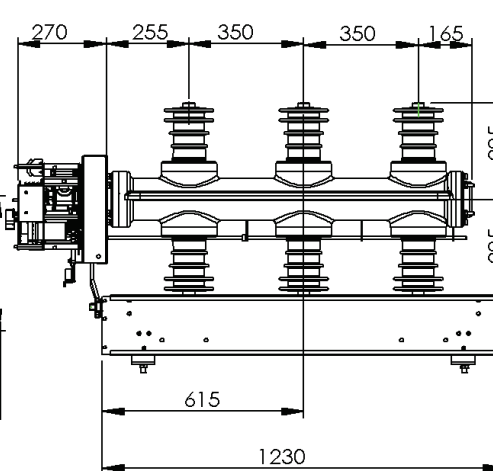


38/40.5 kV  
630A LOAD BREAK SWITCH (width: 750mm)

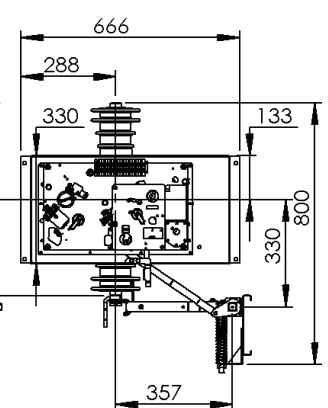
Top view



Side view

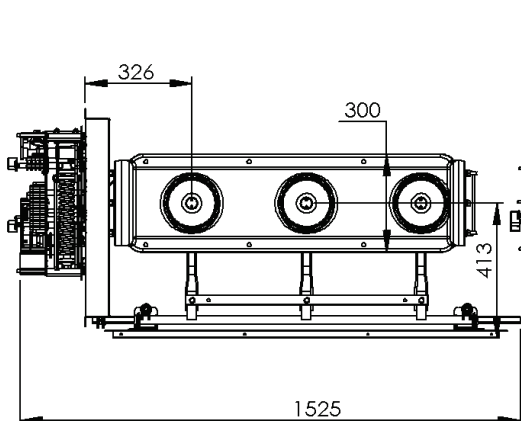


Front view

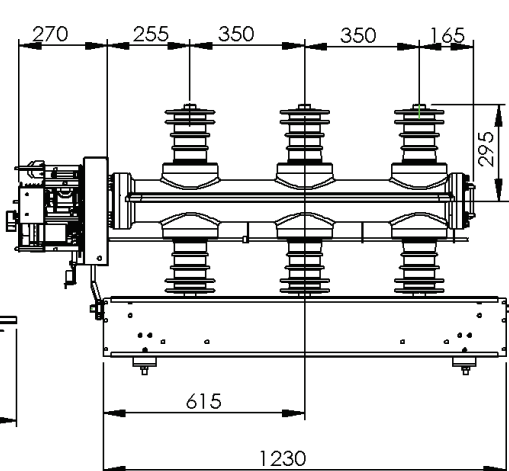


38/40.5 kV  
630A LOAD BREAK SWITCH (width: 1000mm)

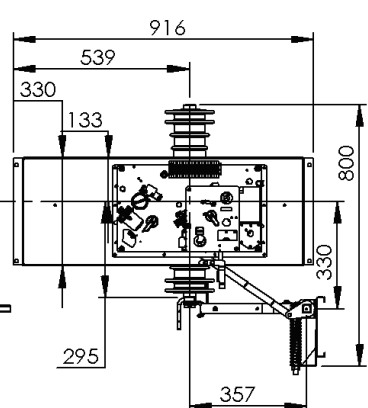
Top view



Side view



Front view





# QUALITY MANAGEMENT



**BATEL ELEKTROMEKANIK SAN. ve TIC. AS.**  
**IAOSB 10001 Street No:13 Cigli / IZMIR - TURKEY**  
**Tel: +90 232 376 76 90(pbx) Fax: +90 232 376 76 91**  
**www.batel.com.tr e-mail: info@batel.com.tr**